

Flutracking Interim Weekly Report

Week #29 – ending 15th November 2009

Summary: Influenza-like illness remains at low levels in all states. The uptake of the H1N1 pandemic influenza vaccine continues to increase in Flutracking participants.

Thank you for your participation in this year's Flutracking online influenza surveillance project. We are continuing our surveys over summer this year to monitor any resurgence in H1N1 pandemic influenza and we appreciate your continued help over summer.

This survey was sent on Monday 16th November and by Thursday 19th November we had received 5,392 responses (5,404 last week) from 3,733 people responding for themselves and 1,659 household members across Australia.

Table. Respondent numbers by jurisdiction.

State/Territory	Number of respondents	%
NSW	2203	40.9%
Vic	829	15.4%
Qld	795	14.7%
SA	96	1.8%
WA	147	2.7%
Tas	1139	21.1%
NT	6	0.1%
ACT	166	3.1%
Total	5392	100.0%

In a normal influenza season we compare the symptoms between vaccinated and unvaccinated participants. However, this type of analysis is unlikely to be helpful as swine influenza (for which the vaccine has only just been made available) remains the predominant circulating influenza strain. We continue to provide more detailed information on what Flutracking is finding in New South Wales, Victoria, Tasmania, and Queensland. Influenza-like illness levels remain low both at the national and state level (see figure below).

For participants 10 years and over who responded to at least one survey since the new H1N1 pandemic vaccine was introduced, 1658/7078 (23.4%) have received the vaccine so far (compared to 20.5% last week). Of the 1948 Flutrackers who identified as working face-to-face with patients, 648 (33.3%) have received the vaccine (compared to 30.9% last week).

Go to www.flutracking.net/maps.html to see our latest maps of influenza-like illness activity.

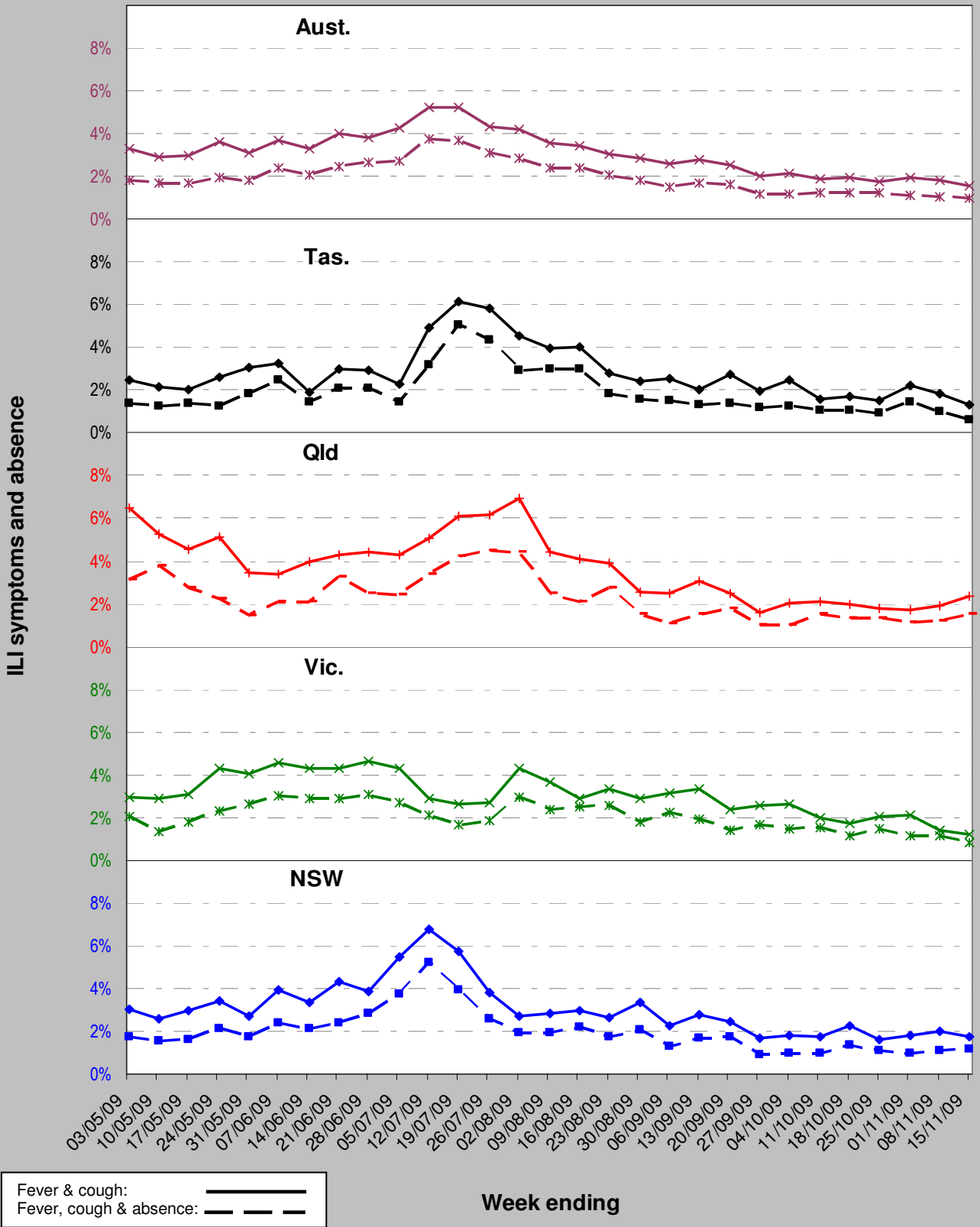
For more information contact the Flutracking Team on 02 49246 477 or at flutracking@hnehealth.nsw.gov.au

To join the survey or for more information go to www.flutracking.net
Report date: 19/11/09



HUNTER NEW ENGLAND
NSW HEALTH

Flutracking influenza-like illness symptoms and absence from normal duties



HUNTER NEW ENGLAND
NSW HEALTH